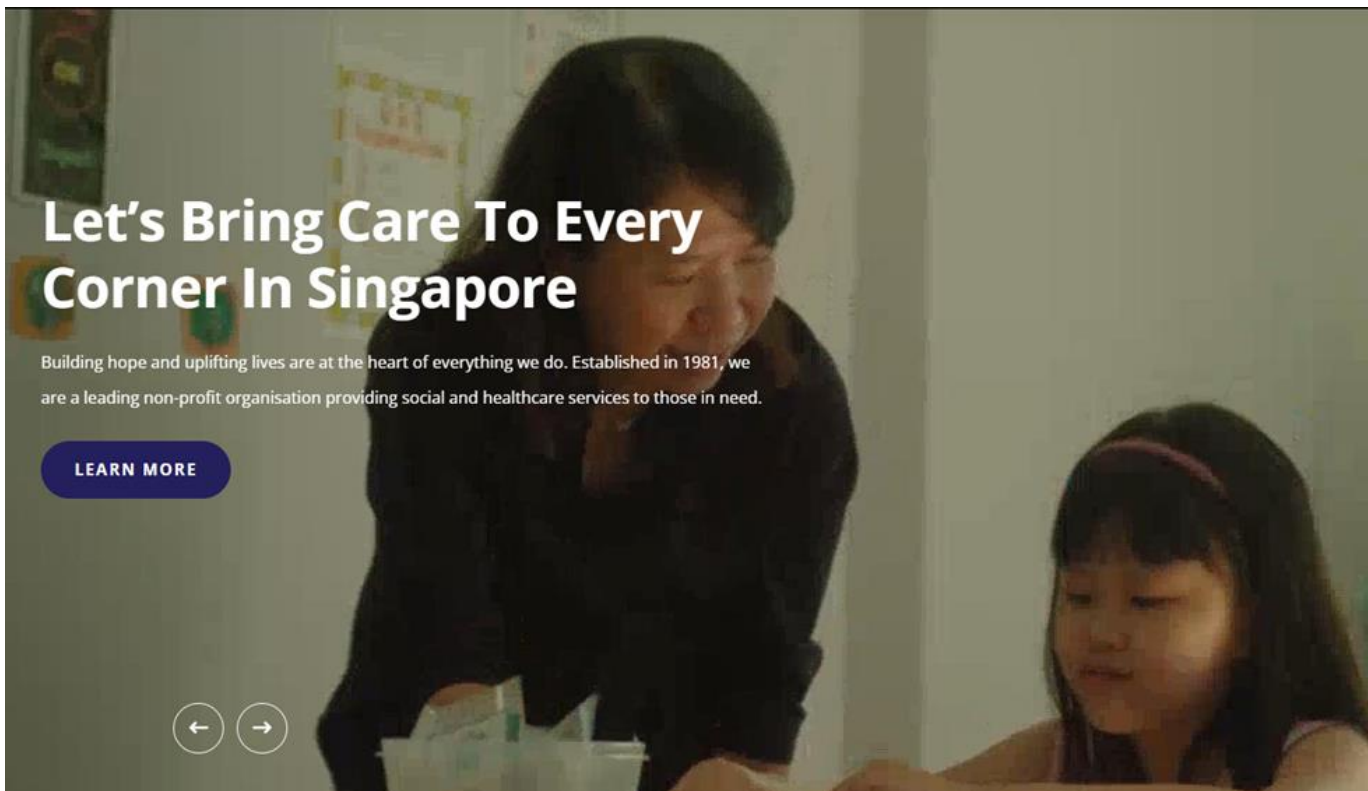


Making An Impact Together

Singhealth Community Forum
22 November 2022





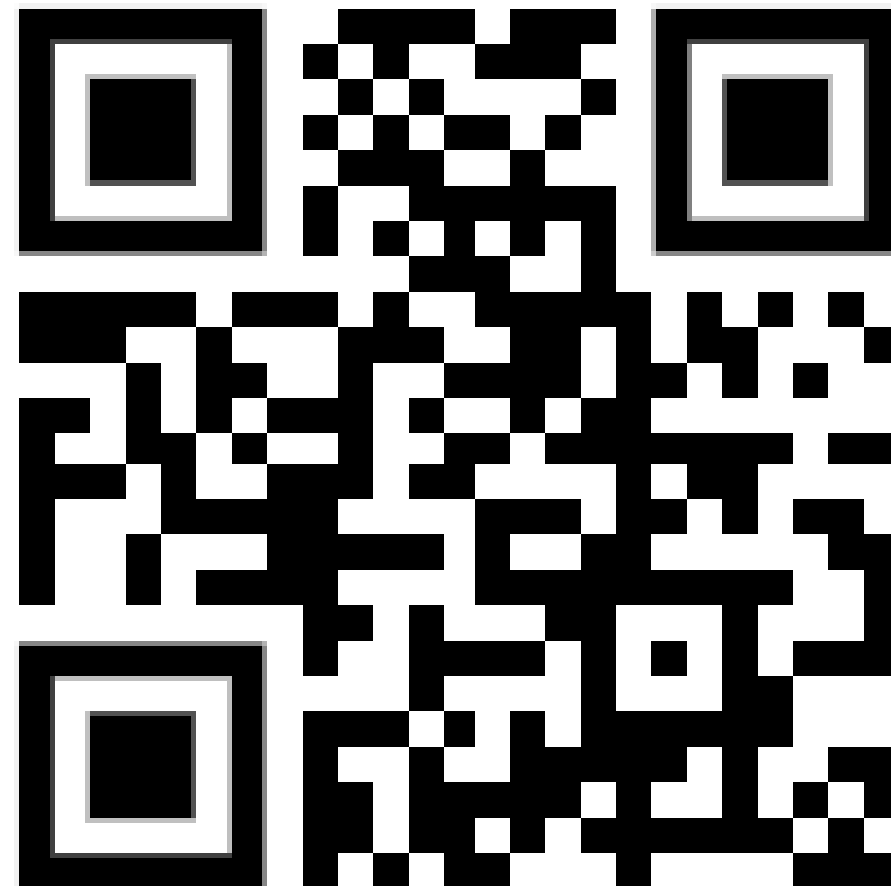
Let's Bring Care To Every Corner In Singapore

Building hope and uplifting lives are at the heart of everything we do. Established in 1981, we are a leading non-profit organisation providing social and healthcare services to those in need.

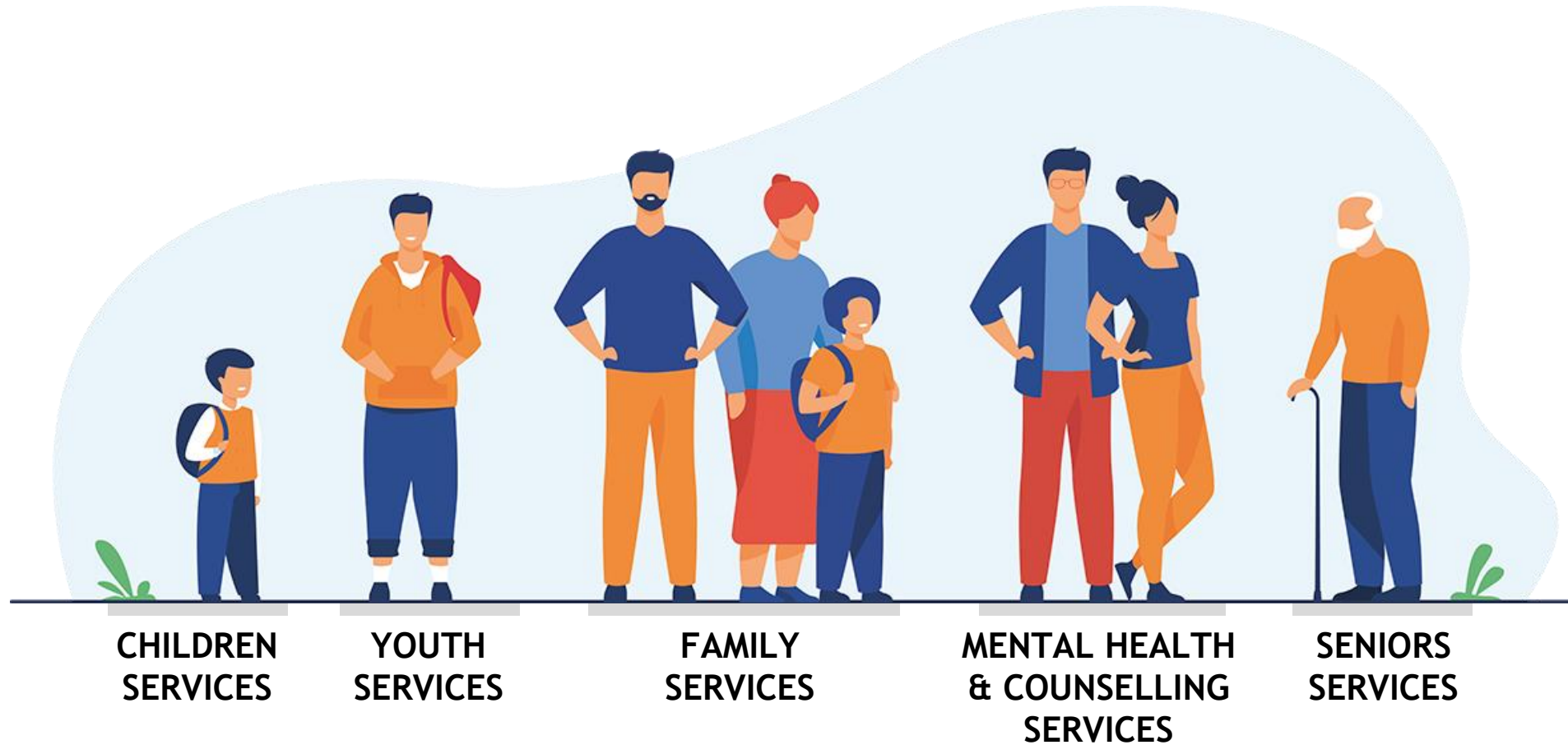
LEARN MORE



<https://www.carecorner.org.sg/>



Our Continuum of Services



**CHILDREN
SERVICES**

**YOUTH
SERVICES**

**FAMILY
SERVICES**

**MENTAL HEALTH
& COUNSELLING
SERVICES**

**SENIORS
SERVICES**

Our Presence and Reach

43

Service Points

520

Staff Strength

2,200

Volunteers

20,000

Service Users Supported

**CARE TO EVERY CORNER
IN SINGAPORE!**

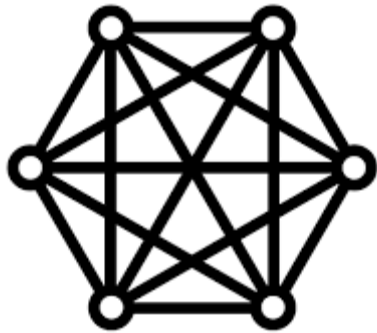
31,000

Individuals Engaged Through Outreach

Our Regional Communities



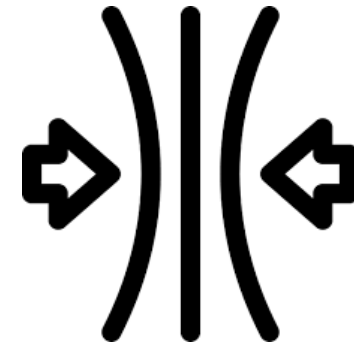
Why the need to work together?



Issues are increasingly complex

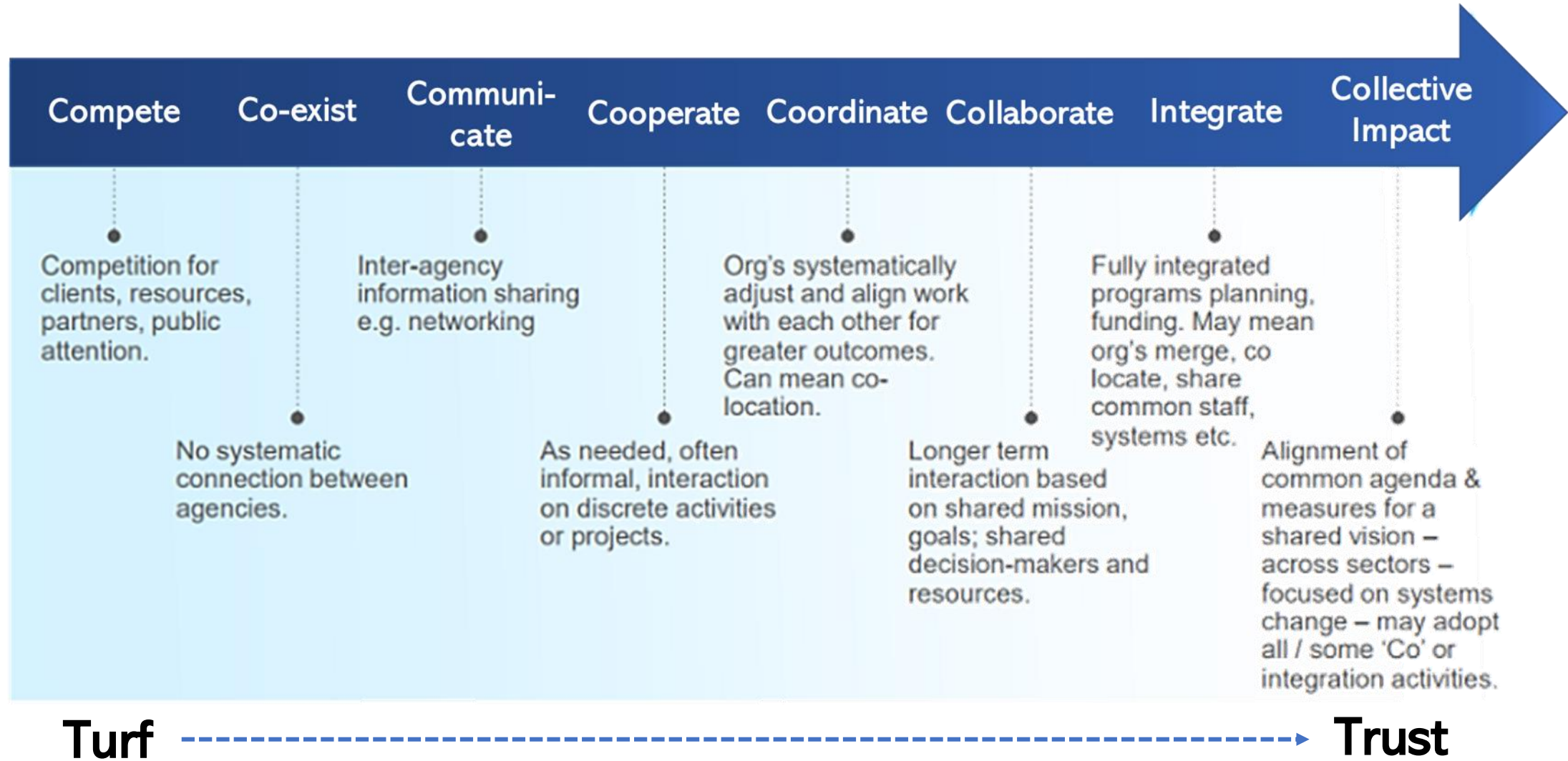


People have limited bandwidth

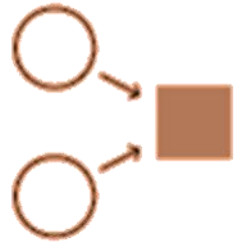


Systems can be efficient & resilient

The Continuum

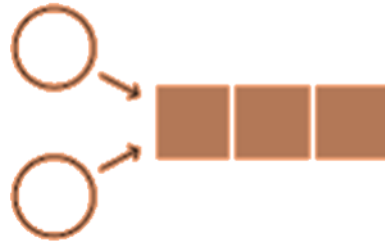


The Continuum



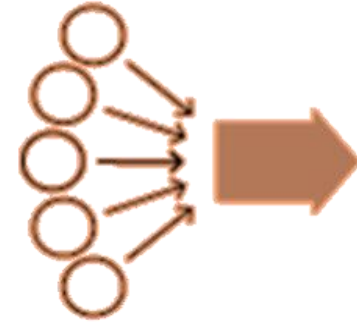
Joint Project

Short-term commitment to work on **a single project** involving **a small set of partners**



Collaborative Program

Commitment to work on **multiple projects** around **a single area of focus** involving **a small set of partners**



Collective Impact

Long-term commitment to make an **impact** on a **complex** issue involving **many actors**

Collective Impact

“Collective impact” is an intentional way of working together and sharing information for the purpose of solving a complex problem.

Collective Impact



**Common
Agenda**



**Shared
Measurement**



**Mutually Reinforcing
Activities**








**Open & Continuous
Communication**



**'Backbone'
Coordinating Organisation**

5 Key Conditions

Collective Impact

 Common Agenda	vs	Multiple Agendas
 Shared Measurement	vs	Separate KPIs
 Mutually Reinforcing Activities	vs	Independent Activities
 Open & Continuous Communication	vs	Reactive & Ad-hoc Communications
 'Backbone' Coordinating Organisation	vs	Lacking Leadership and Support

Collective Impact



**Common
Agenda**

- A common understanding of the problem
- Agree on a joint approach
- Agree on actions to take



**Shared
Measurement**

- Share the same metrics & criteria for assessing success
- Should be evidence-based



**Mutually Reinforcing
Activities**

- Each effort is part of an overall plan
- Each role is clearly stated and coordinated



**Open & Continuous
Communication**

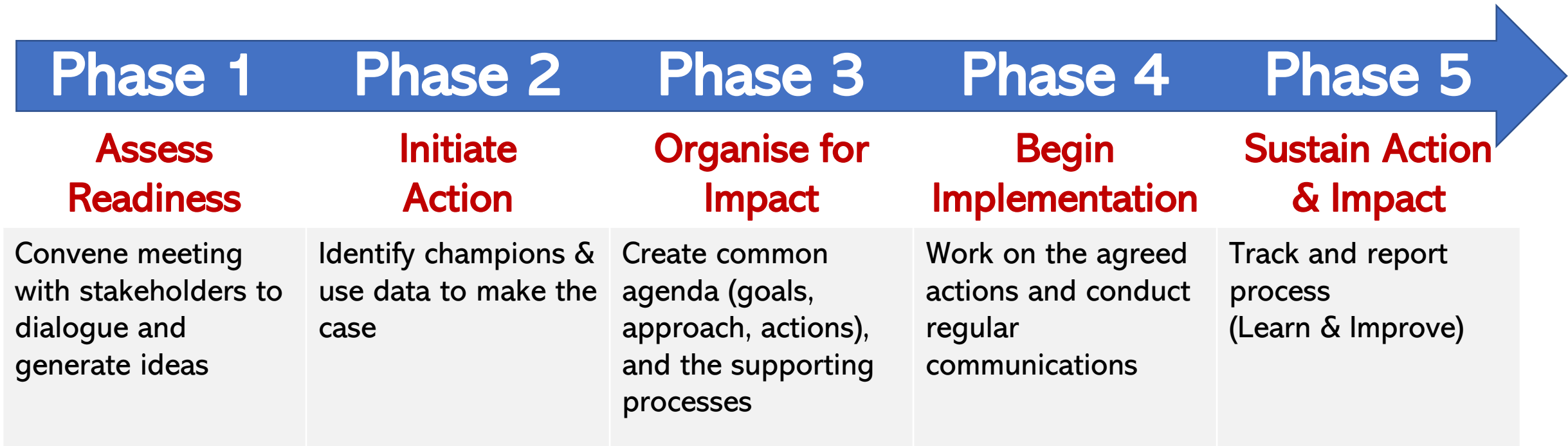
- Regular meetings & communications between meetings
- Invest in building trust with all participating parties



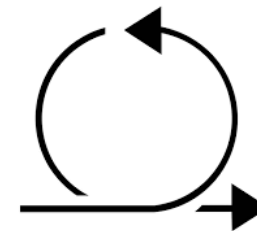
**'Backbone'
Coordinating Organisation**

- Provides 'behind the scenes' support and facilitate the collaborative work
- Provides data collection; reporting; admin; tech support

Collective Impact



Note: Collaboration is not a 'linear' process, it is more **iterative in practice**



Making an Impact Together – CoC Experience

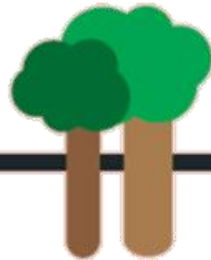


Key Features



PREVENTIVE AND EARLY INTERVENTION

Early start to build foundation through life skills building and strengthening of protective factors in early years.



COMMUNITY APPROACH

Identification of key players to cultivate shared vision for children in the community and inspire change.



SYSTEMIC PARTNERSHIPS

Systemic engagements and interdisciplinary partnerships for collaborative practices to strengthen support for family.



APPLIED SCIENCE AND EVIDENCE

Application of neuroscience, social work and early childhood approaches for practice design and implementation.

Intervention Model

Parent-Child Groups & Workshops
Family Visitations & Coaching
Onsite Child Sessions & Parents Engagement
Family Outings for Parent-Child Bonding

Health Screening and Follow-Up

Primary School Engagements
Parent Group Sessions
Individualised Guidance
Systems Linkages

Pre-Nursery
(Ages 0 to 3)



Nursery
(Ages 3-4)



Kindergarten
(Ages 4-6)

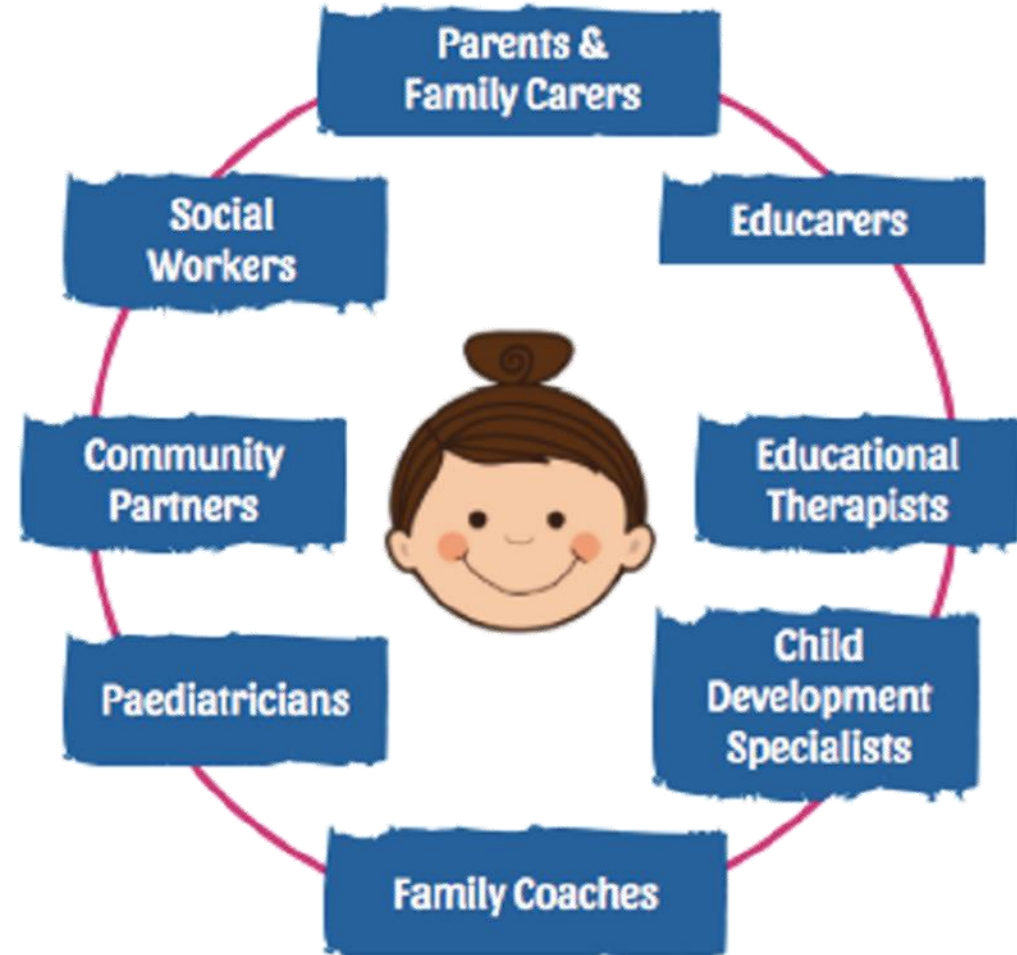


Primary School
(Ages 6-9)



Intervention Model

Establishing a 'Circle of Care' centred on the child, which involves an inter-disciplinary partnership



Our Partners

Preschools



Primary Schools



Organisations



Funders



The Journey



PHASE 1 (2013-2015)

Piloted in 2 preschools
230 children;
76 children in risk
Child-centric and holistic
child care model.



PHASE 2 (2016-2018)

10 preschools and
2 primary schools
1,150 children;
325 children in risk
Integrated system of care



PHASE 3 (2018-2023)

3 clusters, 30 preschools
and 7 primary schools
Children from birth to 9 years
Systems leadership for
preventive and early
intervention model.



Key Ingredients



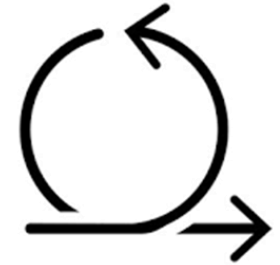
Belief

- ✓ Willingness to take the step of faith
- ✓ Assume good intention



Trust

- ✓ Transparent in sharing intentions & goals
- ✓ Openness to feedback



Agility

- ✓ Shift course if results aren't panning out
- ✓ Learn, adapt and iterate



Care to every corner in Singapore

www.carecorner.org.sg

  @carecornersg