

# Fostering Closer Partnerships in the Eastern Region to support Healthier SG Implementation

## SingHealth Community Forum 2022

### A/Prof Low Lian Leng

Director, Population Health & Integrated Care Office, SGH

Chief Medical Informatics Officer, SingHealth Office of Regional Health

Co-Director, SingHealth Centre for Population Health Research & Implementation

Medical Director, Outram Community Hospital



PATIENTS. AT THE HEART OF ALL WE DO.®



Singapore General Hospital



Changi General Hospital



Sengkang General Hospital



KK Women's and Children's Hospital



National Cancer Centre Singapore



National Dental Centre Singapore



National Heart Centre Singapore



National Neuroscience Institute



Singapore National Eye Centre



SingHealth Community Hospitals



Polyclinics SingHealth

# Achieving Healthier Sg as One Community



## Regional Health Manager

Build and integrate ecosystem in SingHealth region



## Population Health Manager

Fulfilling accountability for regional health outcomes



## Service Provider

Completing the last mile in community care



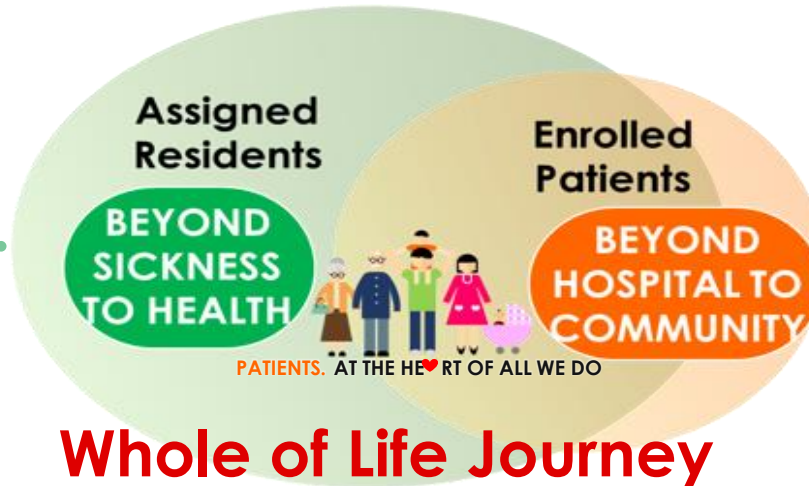
# Consolidate and Synergise

Enabling our residents to **keep well**, **get well** and **live well**



**HEALTH PROMOTION AND DISEASE PREVENTION**

**MOTIVATE RESIDENTS TO KEEP WELL AND LIVE WELL**



**Whole of Life Journey**

*Individual, Family and Community*

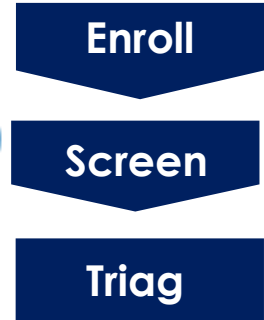
Co-developed personalised **ONE Care Plan**

**Health Action Plan**

- Preventative Health Services
- Health Education & activities
- Wellness Programme

**Chronic Disease Management**

**NEXT GENERATION PRIMARY CARE**



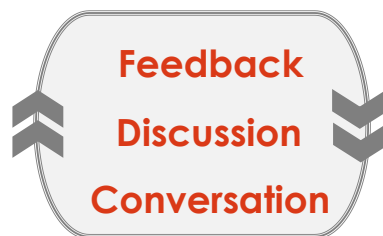
**HOLISTIC CARE AND FOLLOW UP**

**EMPOWER PATIENTS TO GET WELL AND LIVE WELL**

# Centrally-coordinated, locally delivered - GPs Engagement and Support

## Supporting GP outreach

### ENGAGE



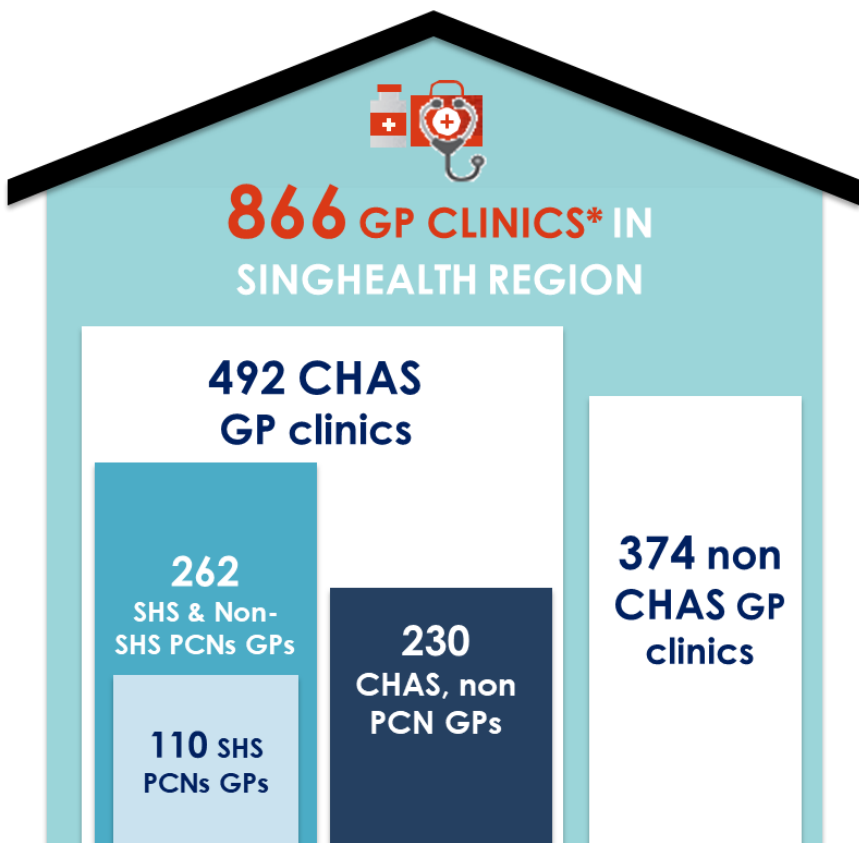
**3** SingHealth facilitated Virtual FGDs



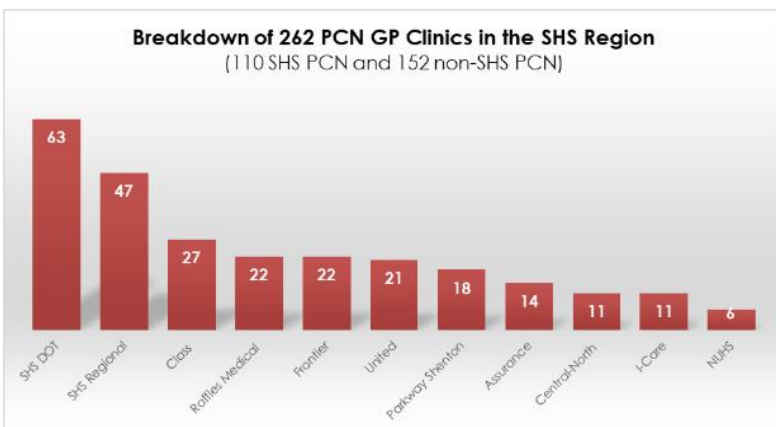
### RECRUIT



### COLLABORATE



\*data correct as of 15 July 2022 (source: MOH)



**2022**

National aic SingHealth  
Webinar | Focus  
Group Discussions |  
Door-to-Door Knocking

**Encourage GPs to join PCN and GPFirst**



**Seek Interest to join SingHealth Heathier SG (HSG) team and support HSG Enrollment**



**2023 and beyond**

Formalise partnership of Healthier SG Enrollment



Shared care  
Right-siting  
Service Support



**Regular Continuing Medical Education (CME) and Training for a range of personnel, supporting GPs' care provision.**

Health Care	Non-Healthcare
GPs, PCN Nurses	Care Coordinators, Clinic Assistants
Allied Health	Medical Social Workers

# Innovate & Co-create a Community Ageing-in-Place Ecosystem

## Healthier SG Pilot @ Bedok South & Marine Parade

### Challenges

Large population of seniors ageing in-situ in HDB flats, with a declining old-age support ratio

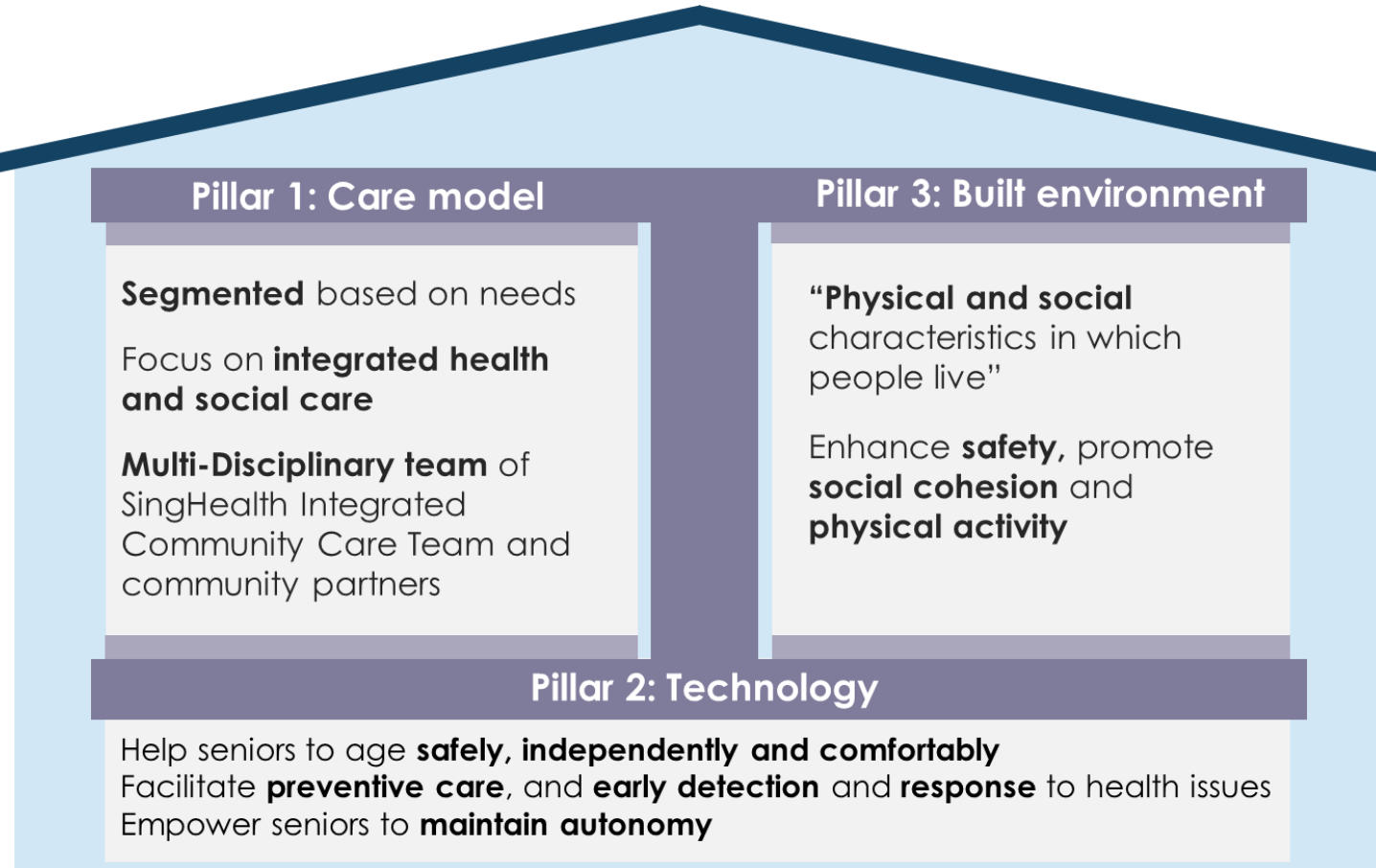
Insufficient community care apartments & nursing homes

### PROPOSED SOLUTION

“Retrofit” care into HDB estates

**Integrate** clinical care, social determinants of health, built environment design and technology

**Provide wrap around support** and layer on community-based research for seniors



In collaboration:



# Equip and support Nursing Homes (NHs) in Advance Care Planning (ACP) and End-of-Life (EOL) care in order to reduce utilization of costly acute care

## EAGLECare: **E**nhancing **A**dvance Care Planning, **G**eriatric and End of **L**ife Care in the **E**ast



Developed professional capabilities in Geriatric and EOL Care

Trained and supported NHs to perform ACP discussions

Developed shared care model to deliver EOL care



Care model & service scope



Common care paths offered to NH partners



Admission to Community Hospitals



# Operationalise One-Stop Wellness Hub for all Families

*Anchoring Community Care to support children and parents*

Community space to seek  
**Advice, Share and Connect**

Collaboration between  
**Health and Social services**

Focus on **Holistic and Person-Centric Care**

Physical signposting to  
**encourage walk-ins**



Strategic Focus Areas



**Official launch from Oct 2023 onwards**

## Building Competencies Using a Ground-Up Approach

### Training Resources for Population Health

Training arm of SingHealth RHS  
sited at SCH

SCH as the **largest provider of CH services** and has the **largest pool of clinical faculty in the ILTC Sectors**

**SCHOOL's strategy** is to provide Continuing Education and Training (CET) using adult learning principles and workplace learning, tapping on faculty in SCH and across SingHealth

Key training **programmes are competency-based** and **aligned with WSQ framework**

## 8 Signature Programmes developed

- WSQ Course in Integrating Health and Social Care (Social Prescribing)
- WSQ in Health Coaching and Motivational Interviewing for Social Prescribing
- Learning Enterprise Alliance (LEA) with Institute of Adult Learning (IAL): Community Care Training for Medical Students
- Home and Transitional Care Training for GPs
- Competency Based Caregiver Training Program for Patients Transiting from Hospital to Community
- Training Needs Analysis for Nursing Homes
- Essentials of Social Prescribing for Community Workers and Volunteers
- Workplace Learning Workshops for Educators



# THANK YOU

*Patients at the heart of all we do!*

