

# Implementing Social Prescribing in SingHealth: A Community Hospital Setting

**A/Prof Lee Kheng Hock**

DCEO (Education and Community Partnerships)  
SingHealth Community Hospitals

# Agenda

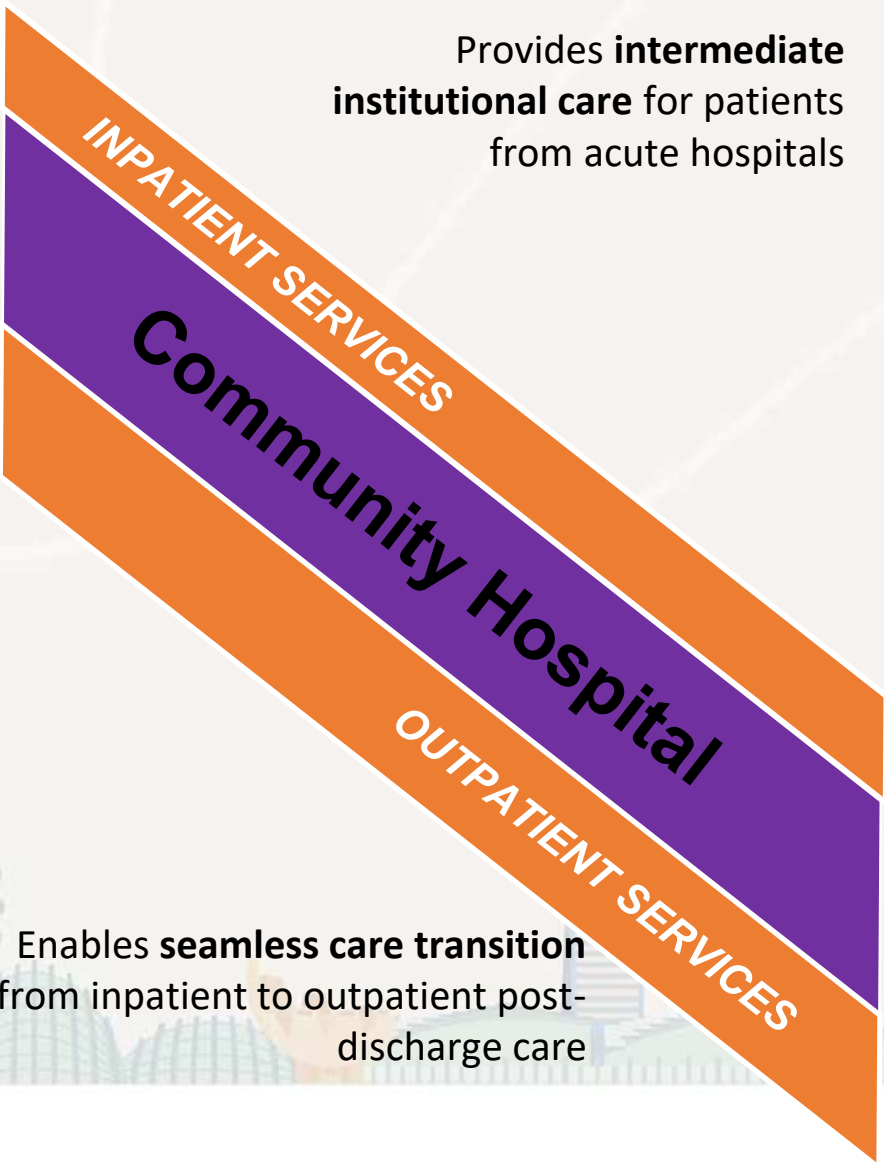
- Why social prescribing in community hospitals
- What did we do?
- When did we do it?
- How did we do it?
- What did we learn?



Restricted, Sensitive (Normal)

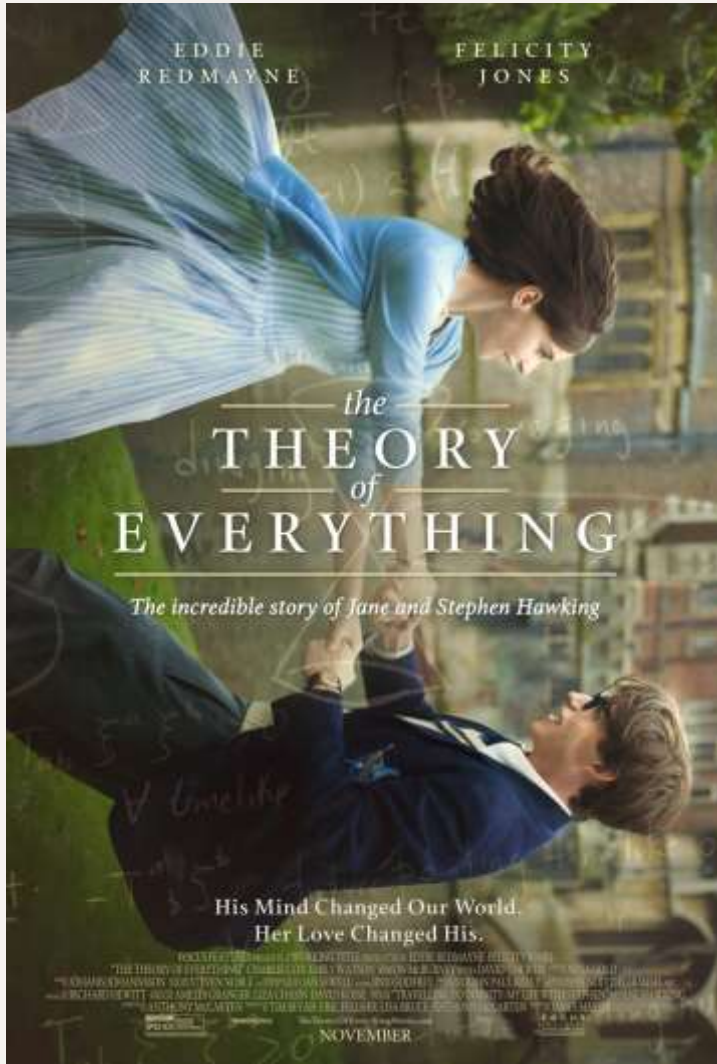
# Community Hospitals: Bridging Care for Patients in Need

Acute Hospital



- Institutional long-term care (NH, Hospice, Sheltered Home)
- Centre-based Care
- Care-Coordination
- Home Care

# A Theory of Everything in Health and Social Care



- Local Area Co-ordination
- Social Prescribing
- Health District
- River of Life
- Asset Based Community Development
- Person-Centered Care
  - Person-Centered Therapy
  - Personalized Care Plan
- Integrated Care
- Virtual Ward
- Integrated Practice Unit
- Transitional Care (Naylor's Transitional Care Model, Eric Coleman's 4 Pillars)
- 6 Domains of Family Medicine

Restricted, Sensitive (Normal)



# The Beginning of Our Journey

“Social prescribing, also sometimes known as community referral, is a means of enabling health professionals to refer people to a range of local, non-clinical services.”  
King’s Fund UK

The King's Fund

## Social prescribing Coming of age

Tuesday 6 November 2018

#socialprescribing



Restricted, Sensitive (Normal)

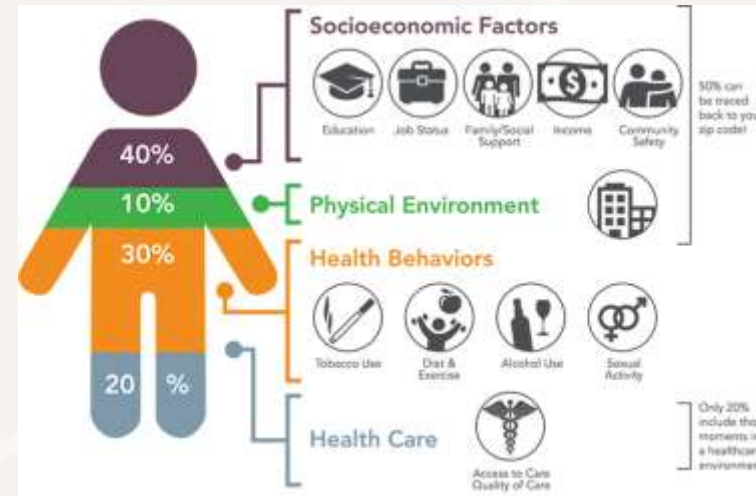
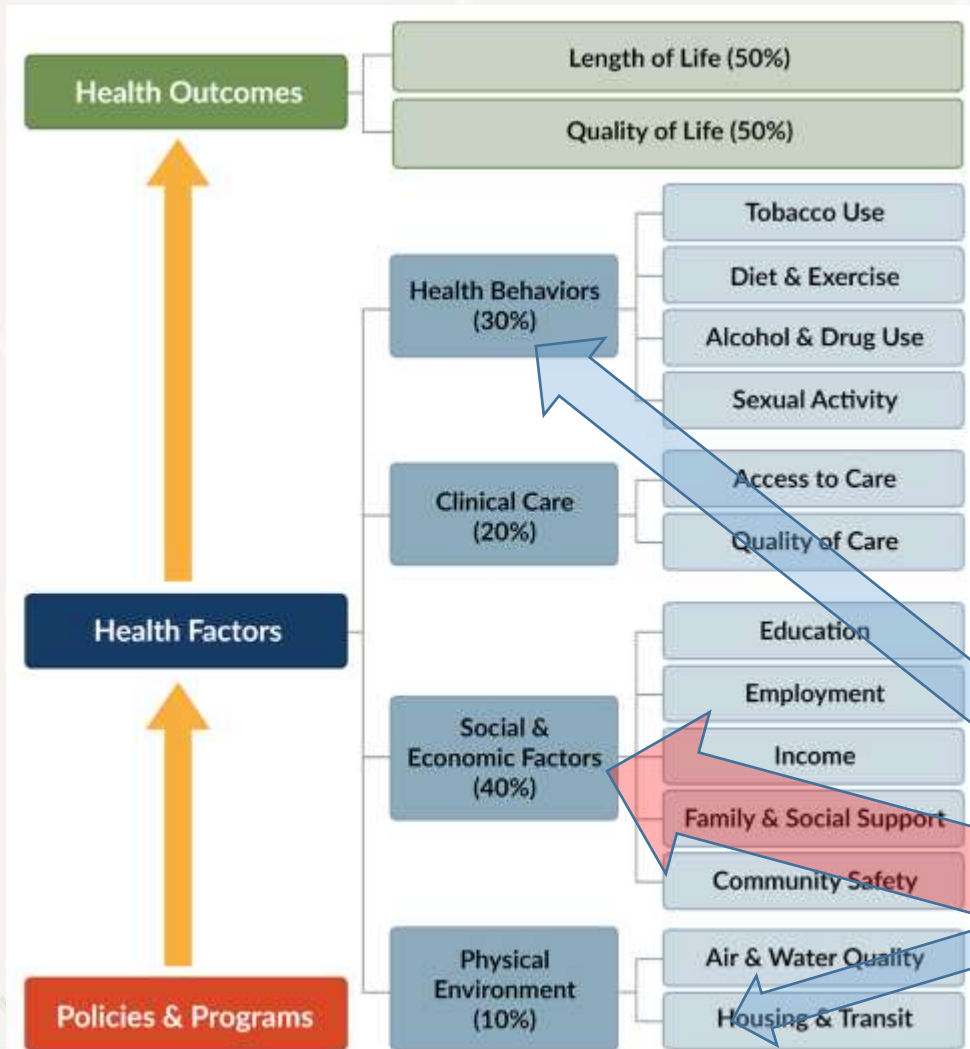
ORGANISED BY:



SPONSORED BY:



# Evolving Our Program Theory of Social Prescribing

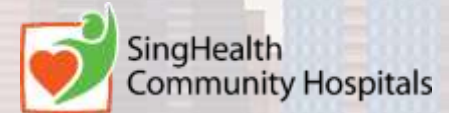


**A**sset  
**B**ased  
**C**ommunity  
**D**evelopment



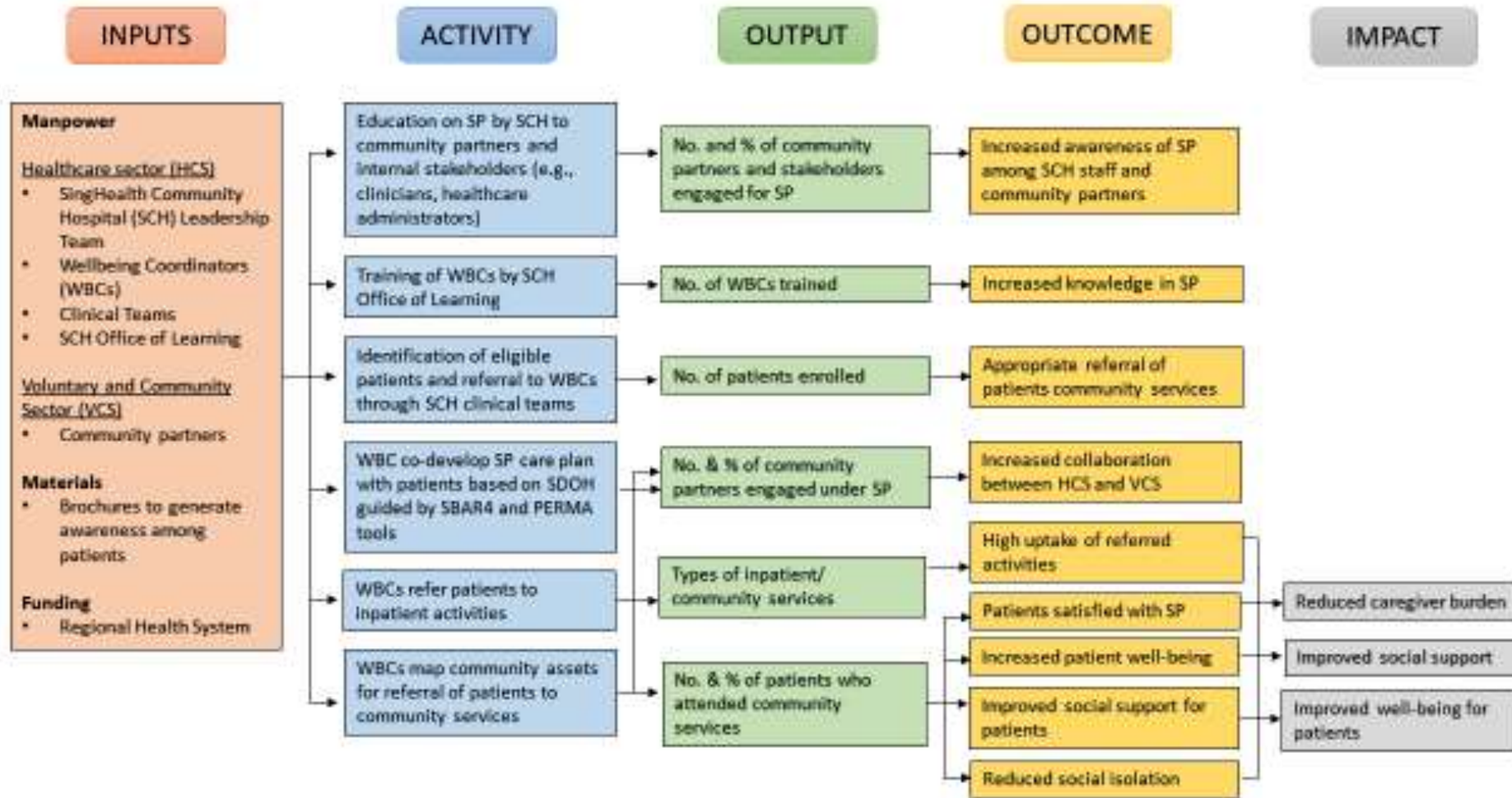
“Social prescribing improve the **wellbeing** of patients by optimizing their **social determinants of health** through **connections to community assets**” SingHealth Community Hospitals

Context  
Mechanism  
Outcome





# Developing a Logic Model for Implementation



Restricted, Sensitive (Normal)

# Bringing the Community into the Hospital



*Digitalizing ward activities for the pandemic*

Inpatient Activities Attended	<input type="checkbox"/> Movie	<input type="checkbox"/> Rummy-O
	<input type="checkbox"/> Religious Service	<input type="checkbox"/> Mahjong Session
	<input type="checkbox"/> Karaoke Session	<input type="checkbox"/> Variety Hour
	<input type="checkbox"/> Pet Therapy	<input type="checkbox"/> Others:
	<input type="checkbox"/> Gardening	

Restricted, Sensitive (Normal)



# Exploration: Jul 2019 to Oct 2019

- **Project team:** Sponsor, Program Leader, MDT Leaders, Administrative Leaders
- Pre-pilot (**Exploratory Implementation**) to test ideas for feasibility and identify target population
- Literature review, international conference in London, visit to best practices in SP
- Adapt to local context and care setting
- Identify and engage internal and external stakeholders
- Define components using Logic Model
  - **Input** (Resources needed including funding and human resources)
  - **Process** (Program processes and interface with internal and external partners)
  - **Outcome** (Chose and develop relevant measurement tools)

## PLAN

- Form project/implementation team
- Situation analysis
  - Target population
  - Feasibility
  - Stakeholders
- Map out community assets
- Define input, processes, outcome
  - Optimize implementation drivers
    - Organization
    - Leadership
    - Competency
- Develop Implementation Plan



Restricted, Sensitive (Normal)

# Installation: Oct 2019 to May 2020

- Implement the re- designed pilot (**Installation**) at one of the 3 hospitals in our organization (BVH).
- Exploratory approach to shape a definitive care model.
- Field tested an **outcome measurement** tool (PAM13).
- Connecting with **community assets** and partners to test out work process.
- Collect **process data** and **feedback** through surveys and interviews with patients, internal and external stakeholders.
- Monitor **resource utilization**
- A modular **competency based training program** was developed, implemented and evaluated.

## DO

- Diffuse, Disseminate or Implement
- Installation or exploration
- Collect data and feedback from stakeholders



Restricted, Sensitive (Normal)



# Initial Implementation: May 2020 to Oct 2020

- By February 2020 the installation of program was suspended as BVH was converted to a community isolation facility for Covid19 patients.
- The “Do” phase are prematurely ended.
- Opportunity to improve processes need modification after testing out with community partners. The outcome measure selected based on overseas practices was found to be unsuitable. **New outcome measures** were found and tested.
- The **curriculum was validated** and adjustments were made based on feedback from learners.

## STUDY

- Effectiveness of implementation (fidelity)
- Effectiveness of implementation drivers
- Acceptability of intervention
- Outcome



Restricted, Sensitive (Normal)



# Implementation: Oct 2020 to Jan 2021

- The **input, process and outcome measures** were extensively revised based on the exploratory implementation.
- **Site of implementation** moved from BVH to SKCH
- **Additional intervention** to address digital exclusion ( a new SDH) was introduced.
- More **support to the SP practitioners** through **coaching and dialogue with management.**
- Preparation for **initial implementation** of a revamped program incorporating lessons learned for the exploratory implementation

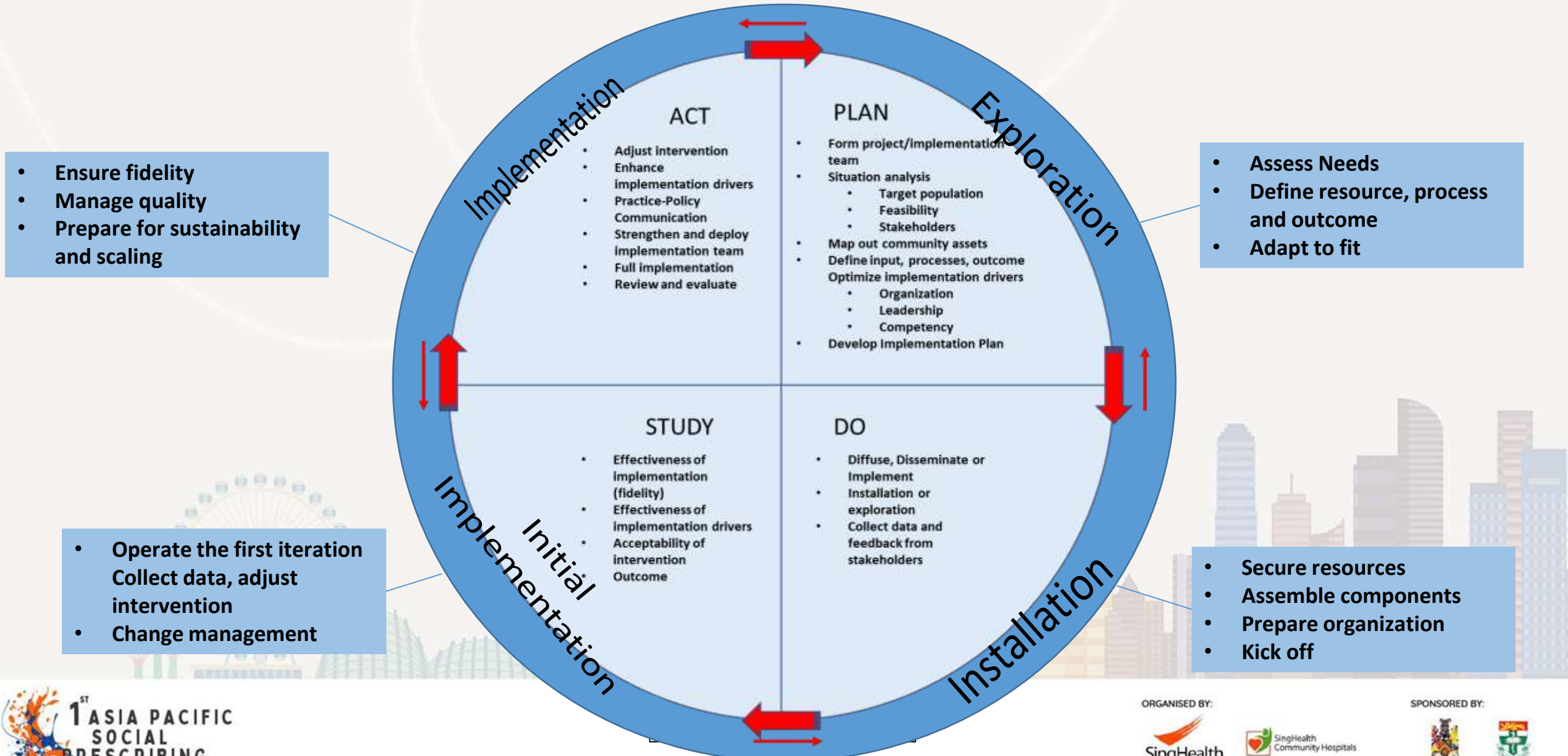
## ACT

- Adjust intervention
- Enhance implementation drivers
- Practice-Policy Communication
- Strengthen and deploy implementation team
- Full implementation
- Review and evaluate



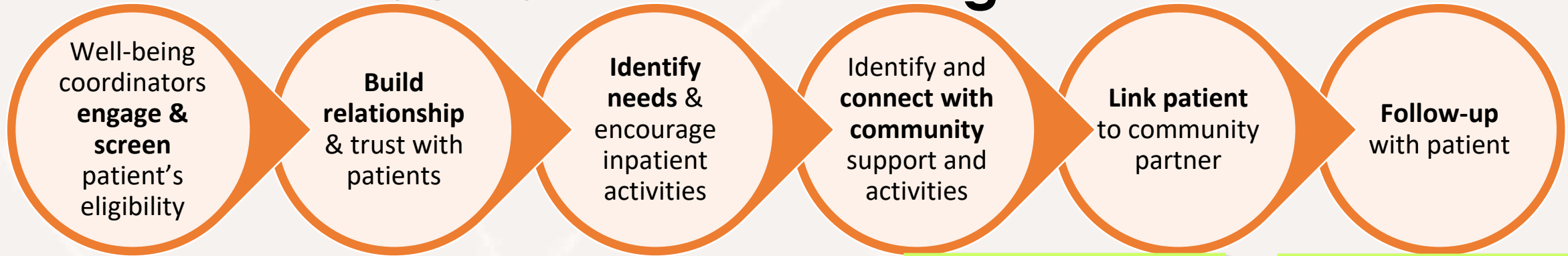
Restricted, Sensitive (Normal)

# Applying Implementation Science to Social Prescribing...



Restricted, Sensitive (Normal)

# SCH Social Prescribing Process



- ✓ Screened **1,570** patients for **Social Determinants of Health** since Oct 2019
- ✓ Engaged **953** patients for **Social Prescribing** since June 2020
- ✓ Enhanced clinical supervision by MSW, with weekly MDM meetings



Restricted, Sensitive (Normal)

Photos: WHO©Juliana Tan

SPONSORED BY:

ORGANISED BY:





# Integrating with Our Transitional and Inpatient Care Teams

Daily morning huddles and weekly Social Prescribing MDMs

WBCs work with Multidisciplinary Team to Co-Develop Plans Between Patients, WBCs and Clinical Teams

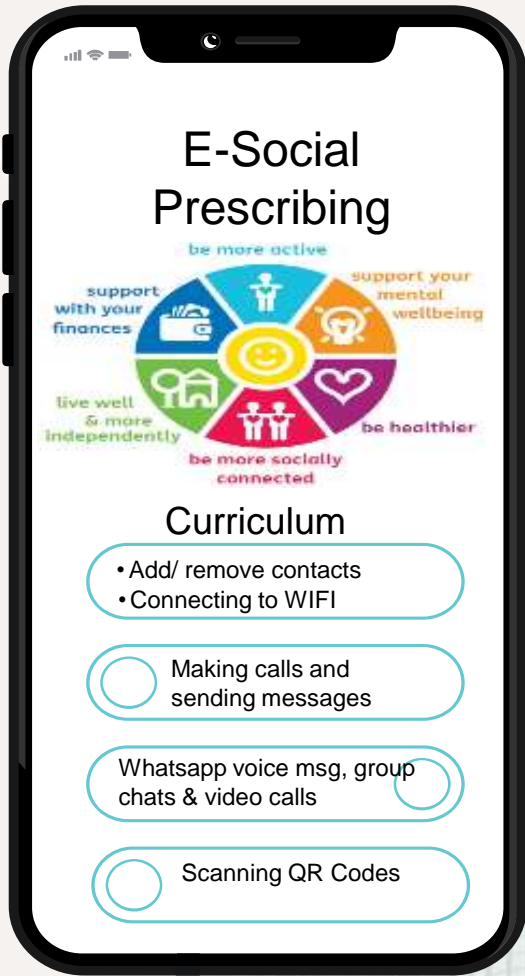
\*Integrated Primary Care for At Risk Elderly



Restricted, Sensitive (Normal)

# E-Social Prescribing: Responding to the Pandemic

Addressing the rise of a new Social Determinant of Health – **Digital Exclusion**



**E-Social Prescribing**

be more active  
support your mental wellbeing  
support with your finances  
live well & more independently  
be healthier  
be more socially connected

**Curriculum**

- Add/ remove contacts
- Connecting to WIFI
- Making calls and sending messages
- Whatsapp voice msg, group chats & video calls
- Scanning QR Codes



Restricted, Sensitive (Normal)



# Connecting Through Community Partners

Encouraging patients to pursue their interest and provide practical support, information, signposting, or referring patients to activities, community groups or support services



**Community partners** help provide activities in SCH & **WBC bridge** Patients to their preferred activities in the community

Community partners include **Public agencies** that provide social activities in the community, e.g. **NParks, National Museum of Singapore, ActiveSG, People's Association, Community Centres, NLB**

ORGANISED BY:



SPONSORED BY:

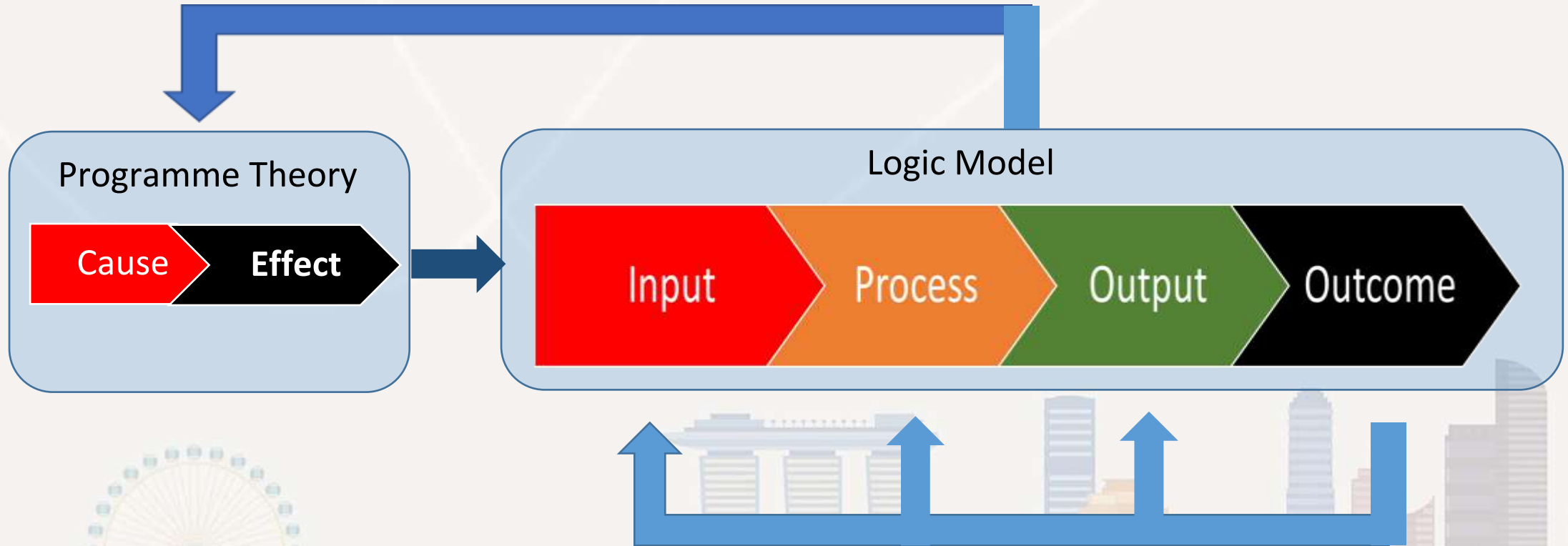


Restricted, Sensitive (Normal)



# Learning from Implementation

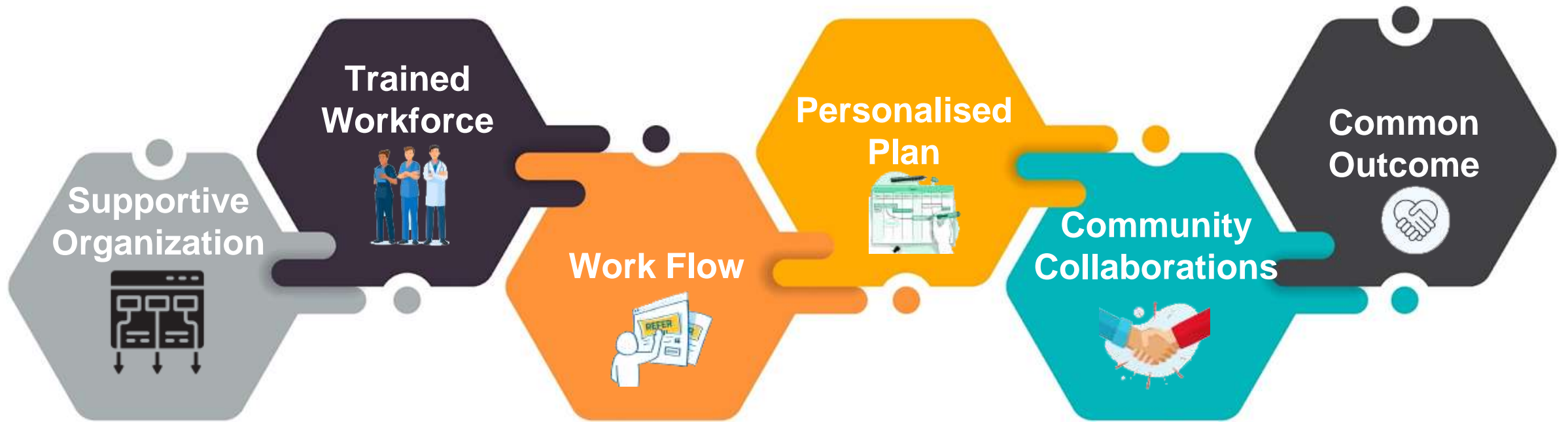
Double Loop Learning Adapting Program Theory to the VUCA World



Single Loop Learning with Iterative Models of Implementation

Restricted, Sensitive (Normal)

# Focusing on Elements in Social Prescribing



Adapted from : <https://www.england.nhs.uk/personalisedcare/social-prescribing/>

Restricted, Sensitive (Normal)

# Developing Tools for Social Prescribing: Asset Map

Data Source



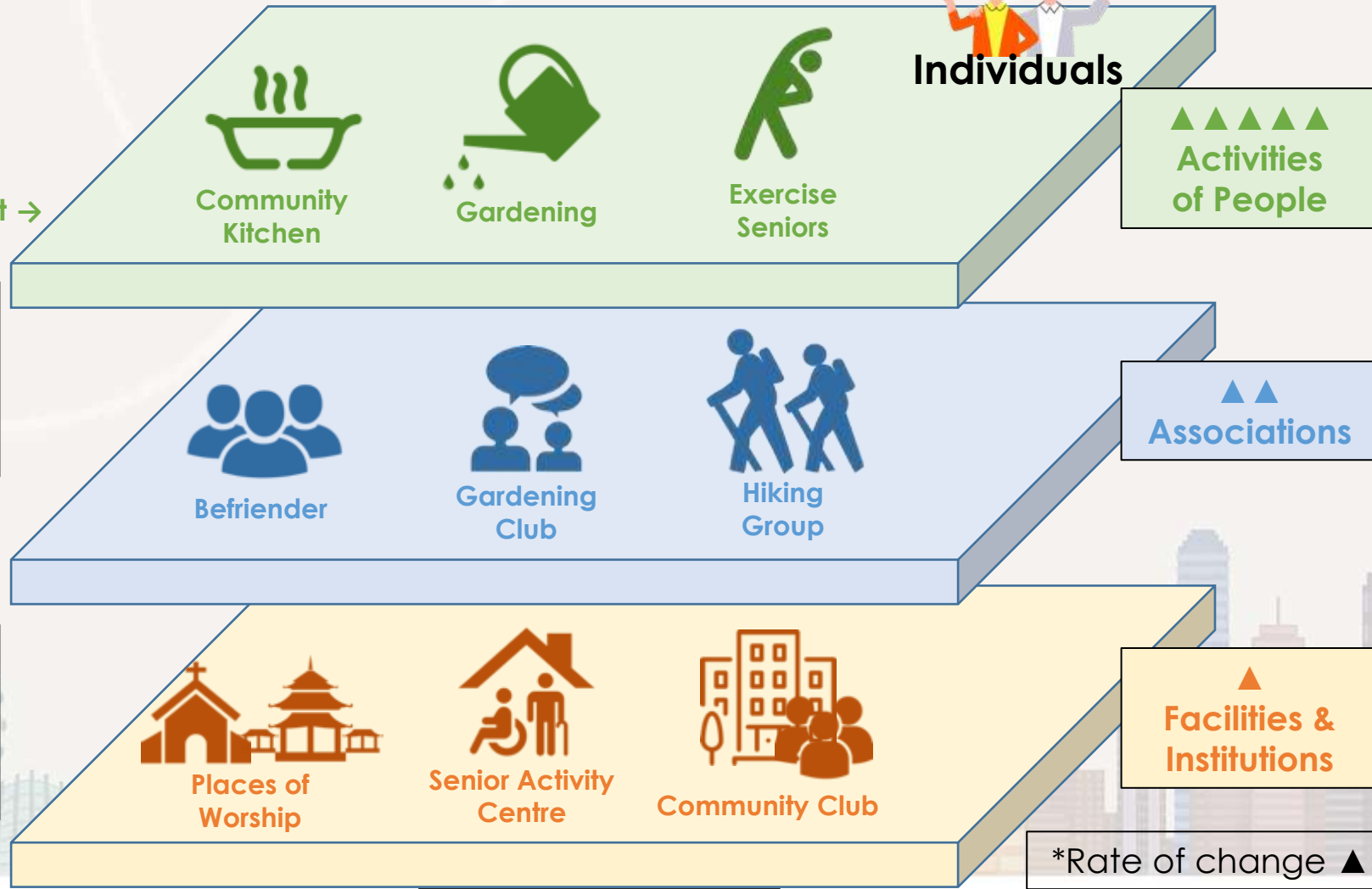
Photo Voice → Case Management →



Community Walk/  
Community Street Audit →



Online Map →



3 Layers of the Living Map

Restricted, Sensitive (Normal)

ORGANISED BY:



SPONSORED BY:





# Training a Non-Clinical Workforce



*"The course opens up a new chapter in my life by providing the necessary knowledge to pursue my passion in serving the community."*

– Deepa Srinivasan, 45 (Former IT SAP Consultant)



*"This course provides a forward-looking concept that factors in social and psychological considerations to improve a patient's overall health and wellbeing."*

– Shirleen Ng, 49, (Former Bank Executive)



*"This course gels together the significance of overall health and social wellbeing in the community to enrich a senior's life."*

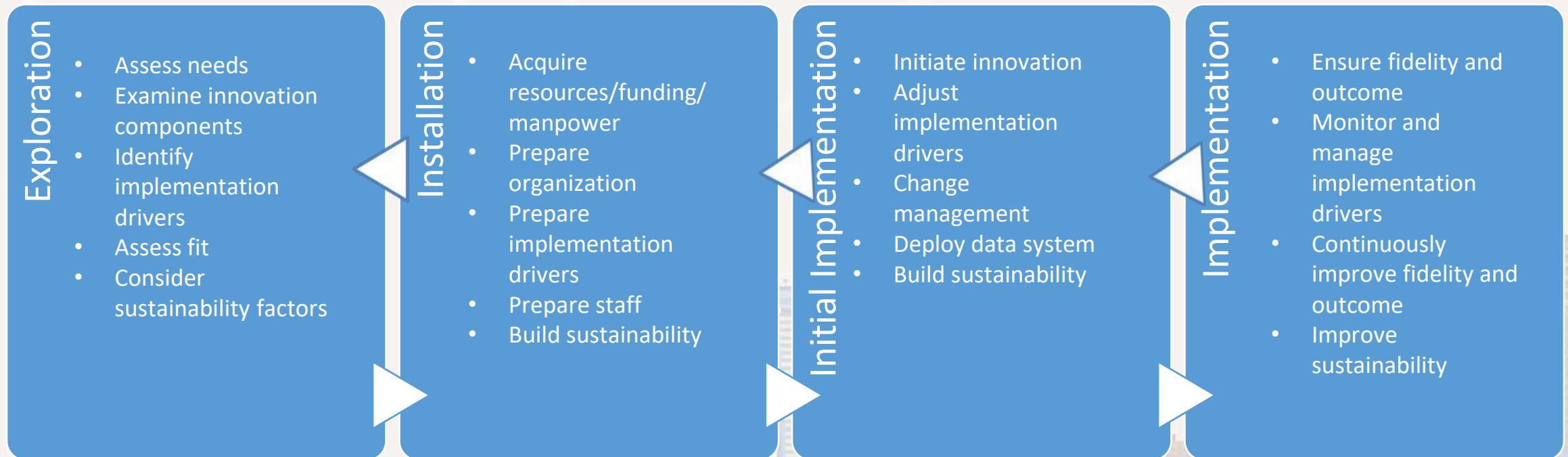
– Ong Guan Gan, 60, (Former Business Operation Director)



Restricted, Sensitive (Normal)

# Implementing in Phases

2 to 4 Years

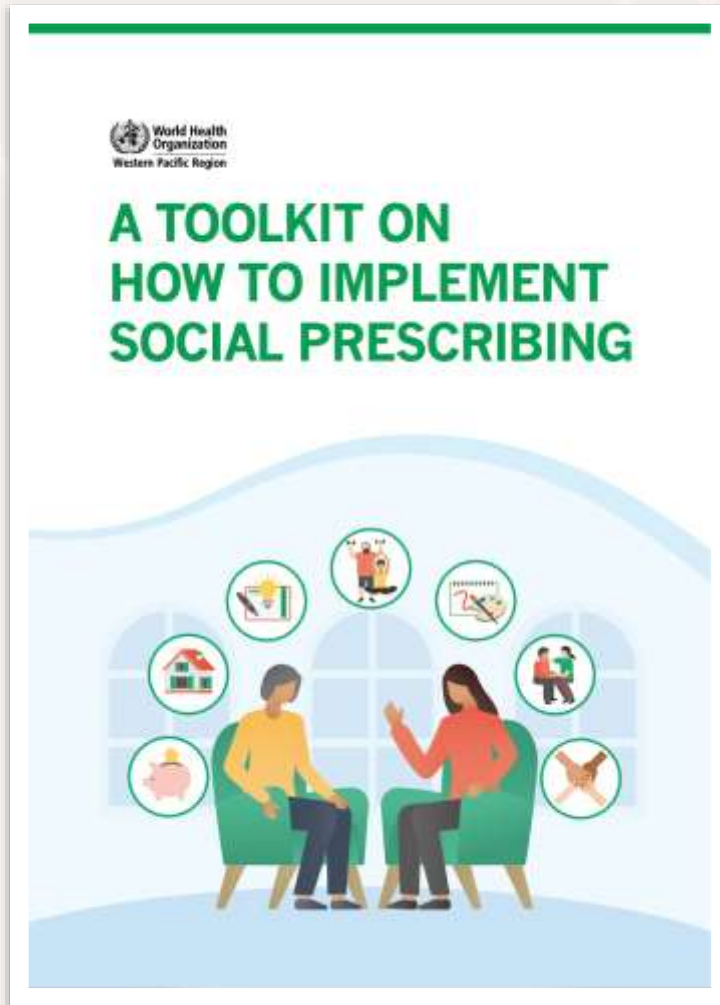


Source: <https://www.activeimplementation.org/frameworks/implementation-stages/>

Restricted, Sensitive (Normal)



# Spread & Scale



Available at: <https://www.who.int/publications/i/item/9789290619765>

## International Sharing of Best Practices



Participation in the **Global Alliance for Social Prescribing**

SingHealth Community Hospitals

## Coaching Developing Countries



Support **social prescribing implementation in developing countries** through WHO platforms



## Engaging Our Stakeholders

Population and Community Health Seminar



Local and international panelist

## Collaboration with WHO – OpenWHO training

Free 5-hour WHO MOOC training

Available online (from April 2022)

Train link workers across Western Pacific Region

Theory + case studies + role plays + videos + quizzes + resources



Screen capture – prototype

Restricted, Sensitive (Normal)

ORGANISED BY:



SPONSORED BY:



# Thank you!



Restricted, Sensitive (Normal)

ORGANISED BY:

SPONSORED BY: