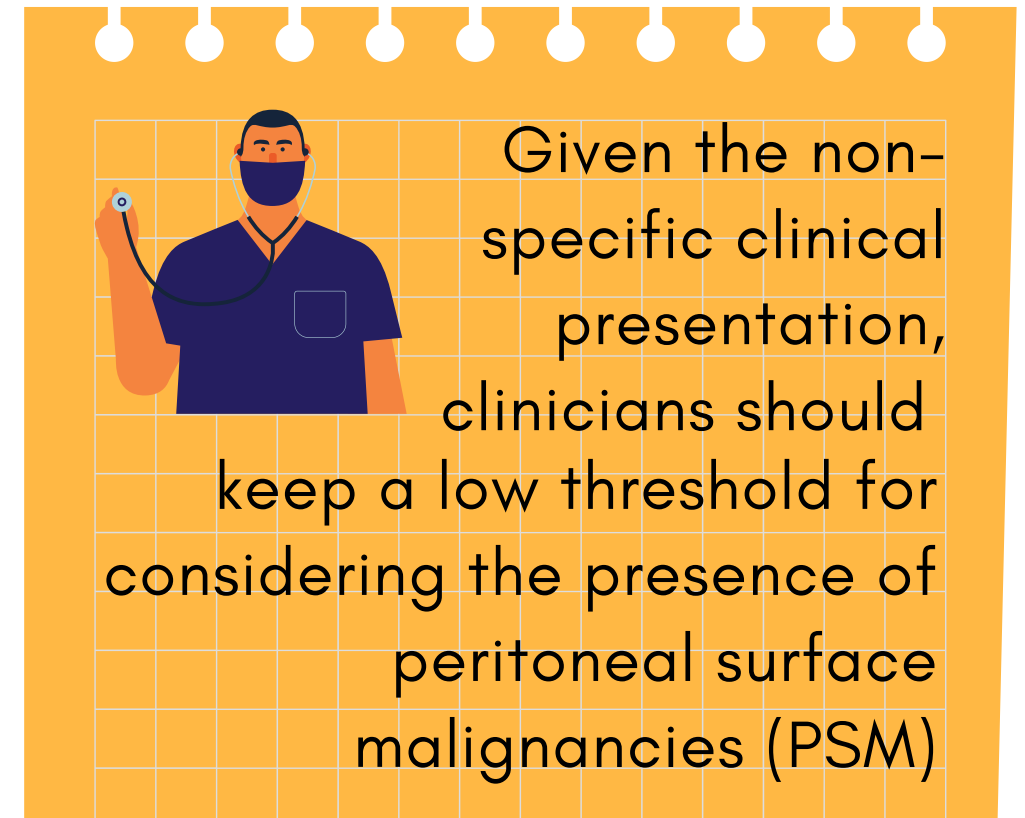


CLINICAL PRESENTATION

Nausea
Vomiting
Distension
Abdominal Pain
Abdominal Mass
Loss of Appetite
Change in Bowel Habits
Rectal or Vaginal Bleeding
Unexplained Loss of Weight



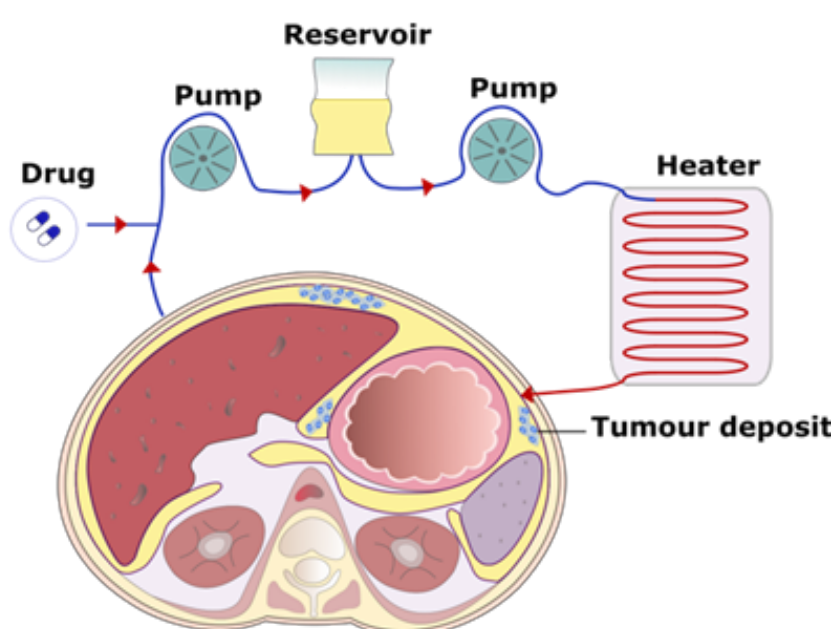
PERITONEAL SURFACE MALIGNANCIES (PSM)

Tumours that may arise from the peritoneum or spread from primary tumours of other organs to the peritoneum.

True incidence of peritoneal surface malignancies is likely underestimated due to challenges in radiological detection and the lack of specialty-specific training.

CURRENT TREATMENT MODALITIES

**CYTOREDUCTIVE SURGERY (CRS) AND
HYPERTHERMIC INTRAPERITONEAL
CHEMOTHERAPY (HIPEC)**

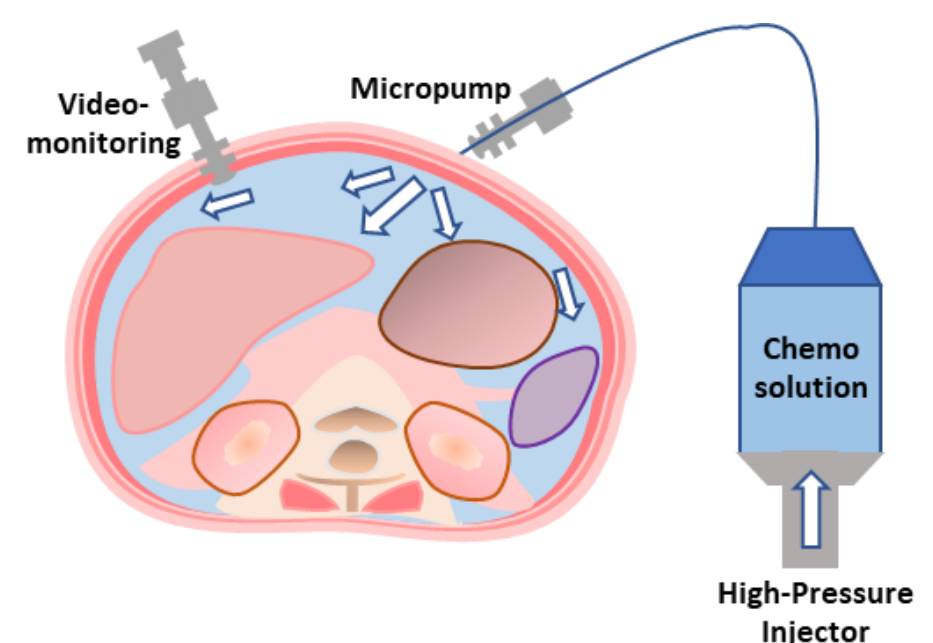


Complete removal of all visible tumours followed by eradication of residual microscopic tumour cells

Criteria for candidates:

- Disease limited to the abdominal cavity
- No or minimal residual disease
- Eastern Cooperative Oncology Group status 0 or 1 (Patient's fitness)

**PRESSURISED INTRAPERITONEAL
AEROSOLISED CHEMOTHERAPY
(PIPAC)**



A novel treatment modality recently adopted as palliative treatment

A minimally invasive keyhole procedure to administer chemotherapy directly into the abdominal cavity in aerosol form