

# SPRinT: A One-stop surgical centre for advanced and rare malignancies

## RARE TUMOURS

The European Union Surveillance of Rare Cancers & The United States National Cancer Institute (NCI) defines rare tumours as cancers with an incidence of <6 to 15 cases per 100,000 people/year



### 01 Dilemma

- No guidelines for diagnosis & treatment
- No current established standard of care
- Late diagnosis and poor prognosis compared to more common cancers



Considered "Orphan Diseases" for which the cost of developing therapies are unlikely to be recovered from sales revenue



Low case load → therapeutic clinical trials are difficult to conduct & financially inviable



Diverse group of cancers with little available definitive information

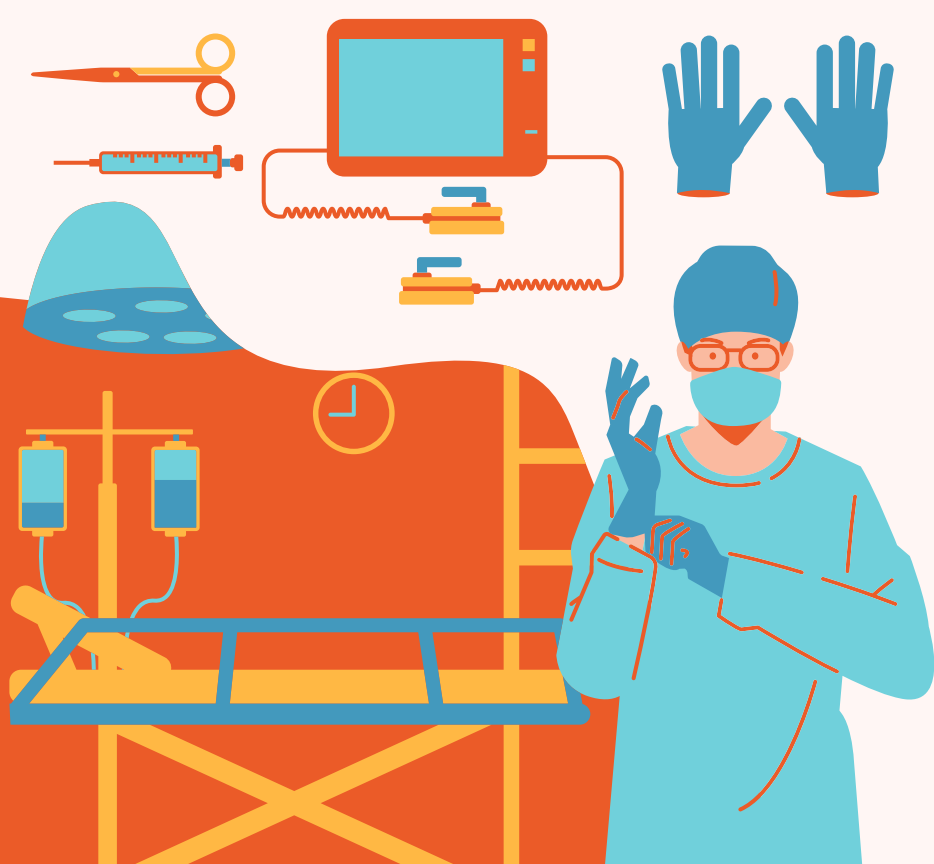


Challenging to diagnose, treat and manage



### 02 Multidisciplinary Care

- Centralisation of management of rare cancers in a multidisciplinary setting
- Vast amount of specialised experts
- Molecular forensics may objectively identify cancers
- Based on pathognomonic mutations



### 03 Subspecialist Surgical Care @ SPRinT

- Surgeons are cross-trained
- Personalised approach on a case-by-case basis
- Comprehensive management with careful patient selection
- Non-organ-centric approach
- SPRinT's research facilities, capabilities and experience